



Inn-Phone™

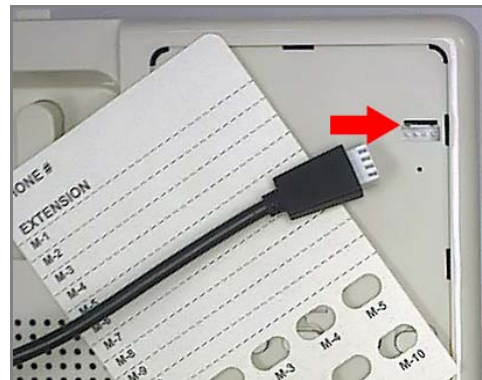
A Division of MED-PAT INC.

31 Riordan Place,
Shrewsbury, NJ 07702

PROGRAMMING INSTRUCTIONS

CONNECTION

- 1- Connect the cable to the serial port on the back of the computer.
- 2- To access the programming port on the phone, remove the clear plastic cover and paper insert from the front of the phone.
- 3- Insert the small rectangular plug on the cable into the same size rectangular hole in the phone. NOTE that it can only be inserted one way: The two small ribs on the side of the plug face towards the back of the phone.



- 4- The telephone does not need to be connected to your phone system for programming. However, if connected to the phone system, be sure the phone is hung up.

PHONE NUMBER FILE SETUP

- 1- All phone numbers and related information are entered into the phone number chart on the computer screen. Each row has information for the memory button to be programmed, and the left border indicates the button's location (see chart for button layout). Just fill in as many rows as corresponds to the number of memory buttons on the phones you are programming.

- 2- In the first column, fill in the name used to reference that button; This probably corresponds to the name you have printed on the paper insert to identify buttons; Such as LAUNDRY, FRONT DESK, etc.
- 3- In the second column, fill in the number sequence which needs to be dialed. If a pause is needed, see SPECIAL FUNCTIONS section below. A pause may be needed to wait for a second dial-tone or computer access; For example, when you access an outside line or a long distance provider.
- 4- In the third column, repeat the required number sequence (same as in second column). This is compared with second column by the computer to find typing errors.

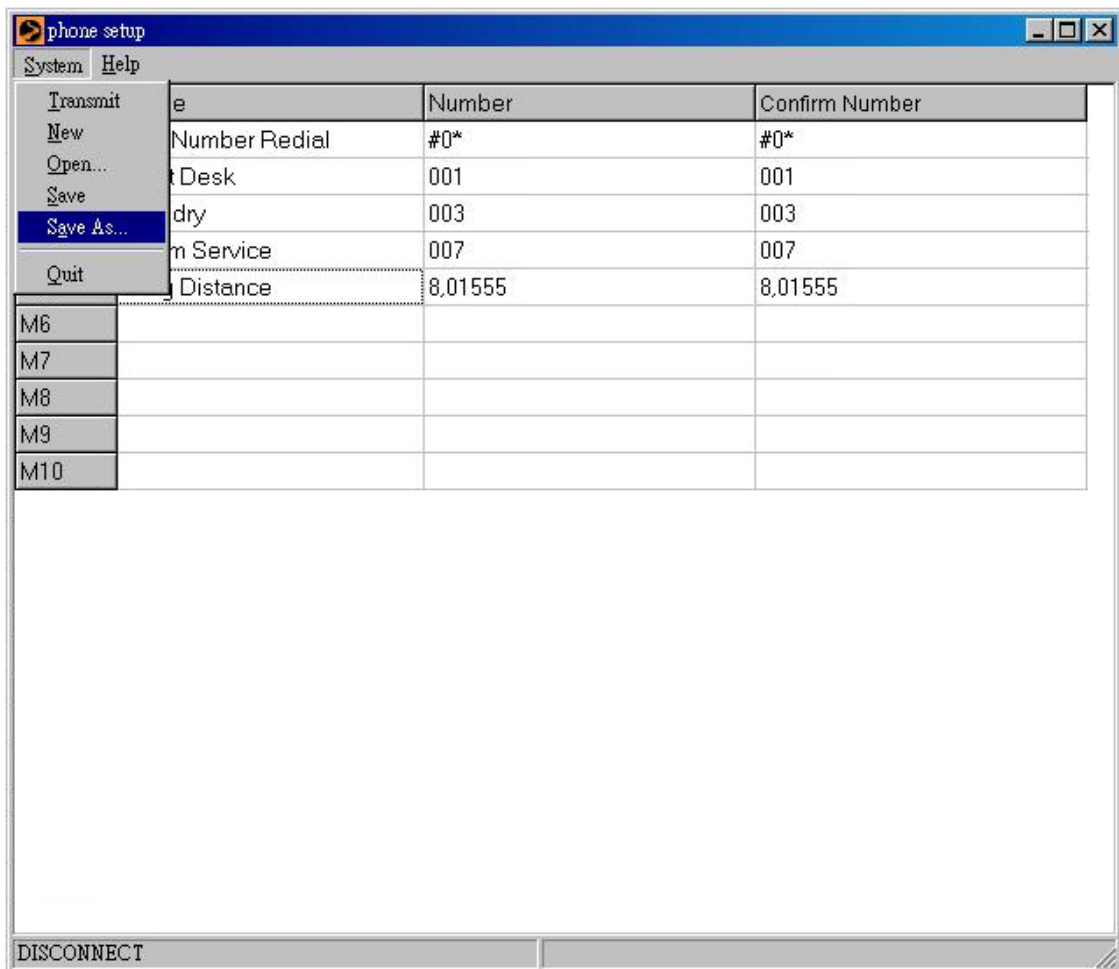
The screenshot shows a window titled "phone setup" with a menu bar containing "System" and "Help". Below the menu bar is a table with three columns: "Name", "Number", and "Confirm Number". The table has 10 rows, labeled M1 through M10 in the first column. The data for rows M1 through M5 is as follows:

	Name	Number	Confirm Number
M1	Last Number Redial	#0*	#0*
M2	Front Desk	001	001
M3	Laundry	003	003
M4	Room Service	007	007
M5	Long Distance	8,01555	8,01555
M6			
M7			
M8			
M9			
M10			

At the bottom of the window, there is a "DISCONNECT" button.

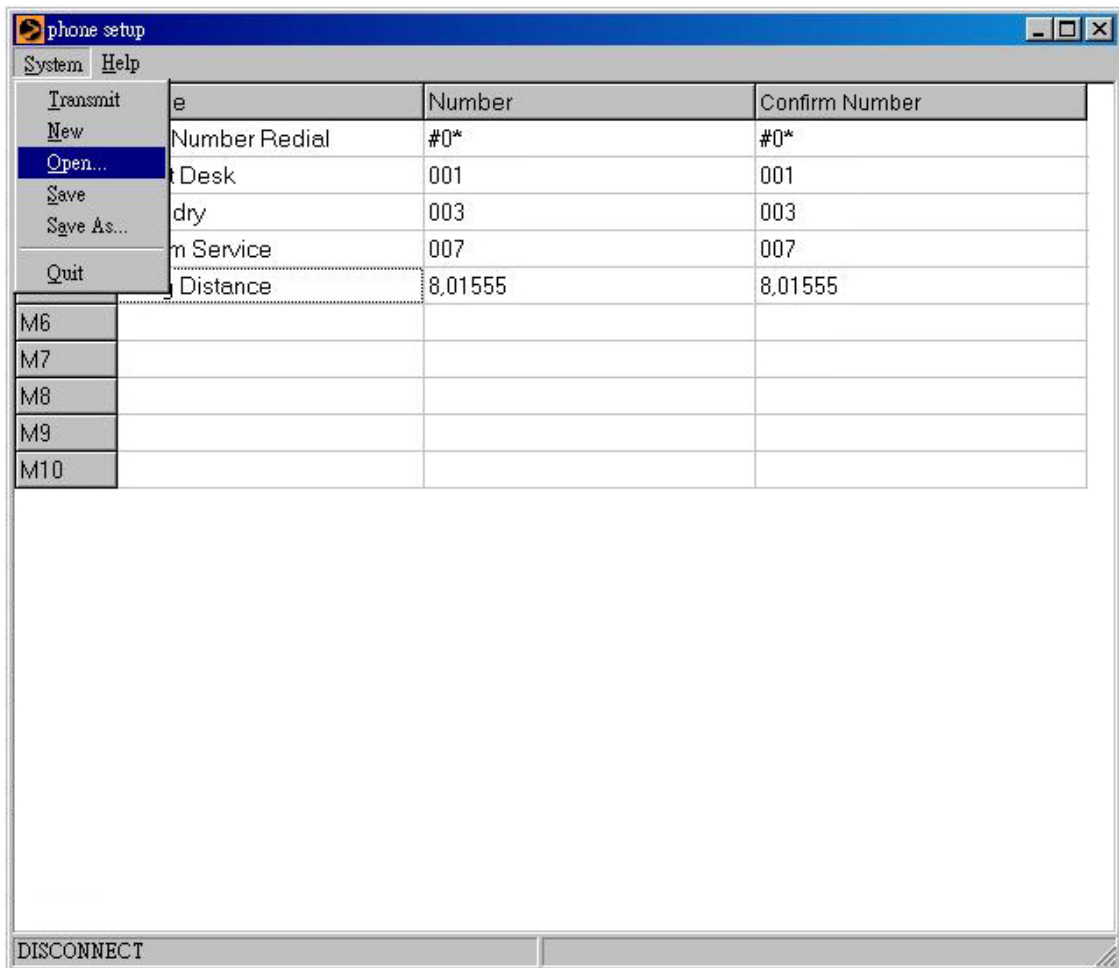
5- When the phone number chart is completed, save a copy for future use. To save a copy, mouse click on the upper left SYSTEM icon to pull-down the menu. Then click on SAVE AS to open your computer's file saving box; enter a name for your file; then click on SAVE. The default location for saving is in the same directory as this INN-PHONE TelSet program. However, you can change the file saving location to any directory you prefer.

If you are modifying a chart which has already been saved on the computer, then from the SYSTEM pull-down menu you should click on SAVE. This modifies the saved file without the option of assigning a new file name.

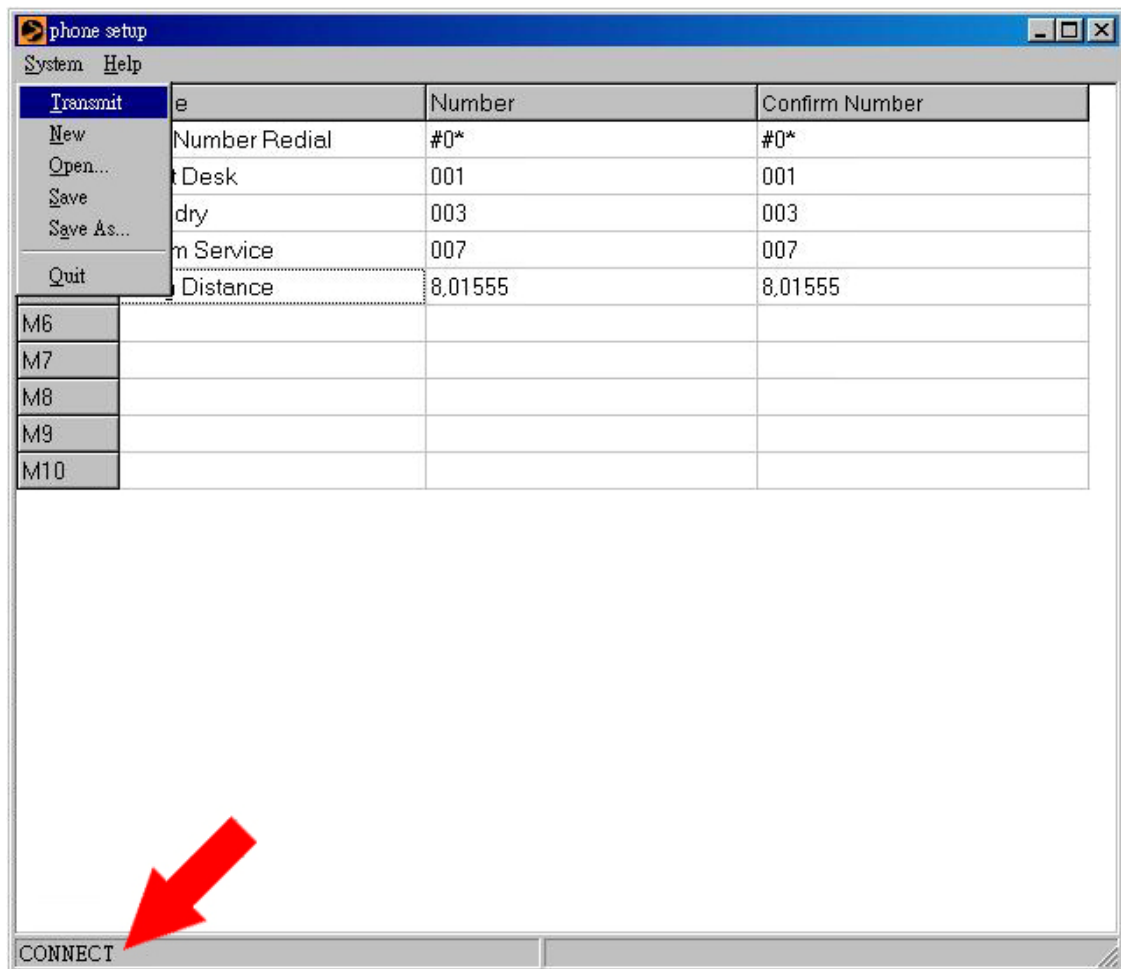


PHONE NUMBER FILE USE

- 1- To open a phone number file, mouse click on the upper left SYSTEM icon to pull-down the menu. Then click on OPEN to open your computer's file access box; Mouse click on the file you want to open and then click on OPEN. The on screen chart will then be filled with all the information saved in that file.



- 2- After connecting the computer to the telephone, mouse click on the upper left SYSTEM icon to pull-down the menu. Then click on TRANSMIT to transmit the data to the telephone. You will see indication of programming activity in the status bar at the bottom of the chart. And after about 2-4 seconds you should see "TRANSMIT DATA OK". Now remove the plug from the phone, as the process is complete.



SPECIAL FUNCTIONS


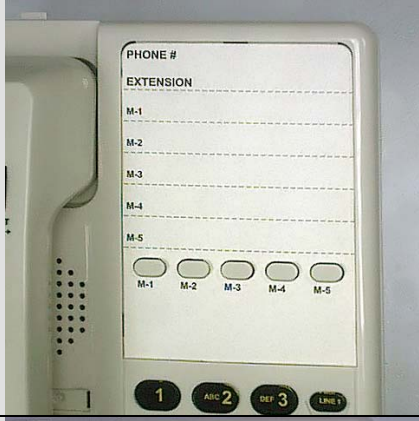
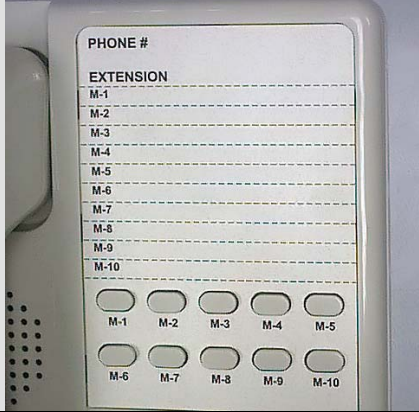
1- PAUSE:

When entering the numbers into the chart, to add a pause within the dialing sequence enter a comma (,) into the chart, this will insert a single pause of about 1.5 seconds. Pressing the comma multiple times will increase the pause time to multiples of 1.5 seconds.

2- LAST NUMBER REDIAL:

The position 1 memory key can be programmed to REDIAL the last number which was dialed. To make the key function that way, enter the sequence of pound, zero, star (# 0 *) into the chart. The position 1 memory is the only button which can be programmed as LAST NUMBER REDIAL.

BUTTON LOCATION CHARTS

	<p>Inn-Phone with THREE memories</p>
	<p>Inn-Phone with FIVE memories</p>
	<p>Inn-Phone with TEN memories</p>